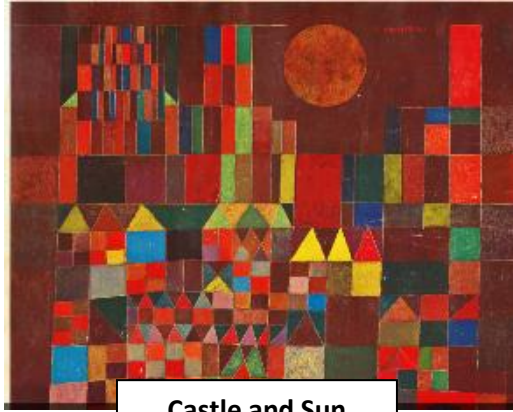




Paul Klee



Castle and Sun

Castle and Sun (1928) is a painting by Swiss artist **Paul Klee**. The images are created out of different geometric shapes and various shades of colour.

Vocabulary

colour spectrum	The range of different colours
colour wheel	A circle with different coloured pieces
control	Taking your time and making it neat
expression	To show thoughts and feelings
opaque	You cannot see through it
palette	A tray for mixing paint
primary colours	The basic colours; red, yellow and blue
secondary colours	Colours made from primary colours; orange, green and purple
stroke	A mark made by a paintbrush on a surface

We will use:

paintbrushes



powder paint



mixing palettes



The Colour Wheel

We can use the colour wheel to discuss and explore different colours.



colour wheel

primary colours



secondary colours

Paul Klee 1879-1940

Paul Klee was a Swiss-German artist. He was one of the most famous painters of the 20th century. His work was influenced by lots of other artists. He was very interested in colour and how to use it in his work.

Year 1 will learn about colour mixing and think about how colours can make you feel. We will explore using shapes and patterns. During Year 1 we learn about the history of Conisbrough Castle. We will use our topic work as inspiration for creating our own Klee-style castle paintings.

Famous works by this artist include 'Cat and Bird' and 'Flora on Sand'

